

relies on adequate supportive care, with dexamethasone and remdesivir included in current treatment protocols [1-3]. The use of convalescent plasma (CP) from patients recovered from COVID-19 as a means of passive antibody therapy has been explored in several clinical trials and has received emergency use authorization in the USA. Although further clinical trials remain necessary to further assess the possible benefit of CP, the FDA has allowed the use of this treatment outside of clinical research (FDA August 2020), representing the only investigational product thus far with such a status. Already early during the pandemic, a small number of studies reported promising results on the efficacy of CP treatment in patients with COVID-19 in different clinical settings [4, 5]. Despite multiple studies, including retrospective cohort studies, reporting on significant benefits of CP treatment, two randomized controlled trials at the beginning of 2020 showed no overall clinical benefit, with both studies being terminated prematurely [6, 7].

With a population of just over 500,000 inhabitants and neighbouring Brazil where high COVID-19 disease incidence was reported, Suriname was confronted with a second COVID-19 wave at the end of May 2020. Given the limited treatment options, we initiated a clinical trial to evaluate the clinical efficacy of CP treatment in patients with severe or life-threatening COVID-19 in Suriname (SuriCovid trial). Prior to

initiating such a study in the low-resource setting of Suriname, significant logistical challenges had to be overcome, including the lack of conventional plasmapheresis machines and lack of a local immune assay to quantify virus-specific and virus-neutralizing antibodies (Abs). Furthermore, the optimal volume of CP for infusion as well as safety of blood donation for a CP donor were unknown. In this study, we made use of a gravity-driven blood filter for CP production, called the HemoClear device [8]. To be able to identify short-term treatment effects in the absence of extensive laboratory diagnostic capacity, changes in oxygen balance and chest x-ray score (CXR) were assessed 2 days after CP therapy. Here, we present the pre-planned interim analysis on Intensive Care Unit (ICU) outcome in COVID-19 patients in Suriname after CP treatment.

Methods

This work is reported in adherence to the preferred Strengthening the Reporting of Observational studies in Epidemiology (STROBE) guidelines. This open-label, non-randomized prospective clinical trial was performed at the Intensive Care Unit of Academic Hospital Paramaribo and the Wanica Regional Hospital, Suriname, from June 2020 to December 2020. Seventy-eight patients were included.

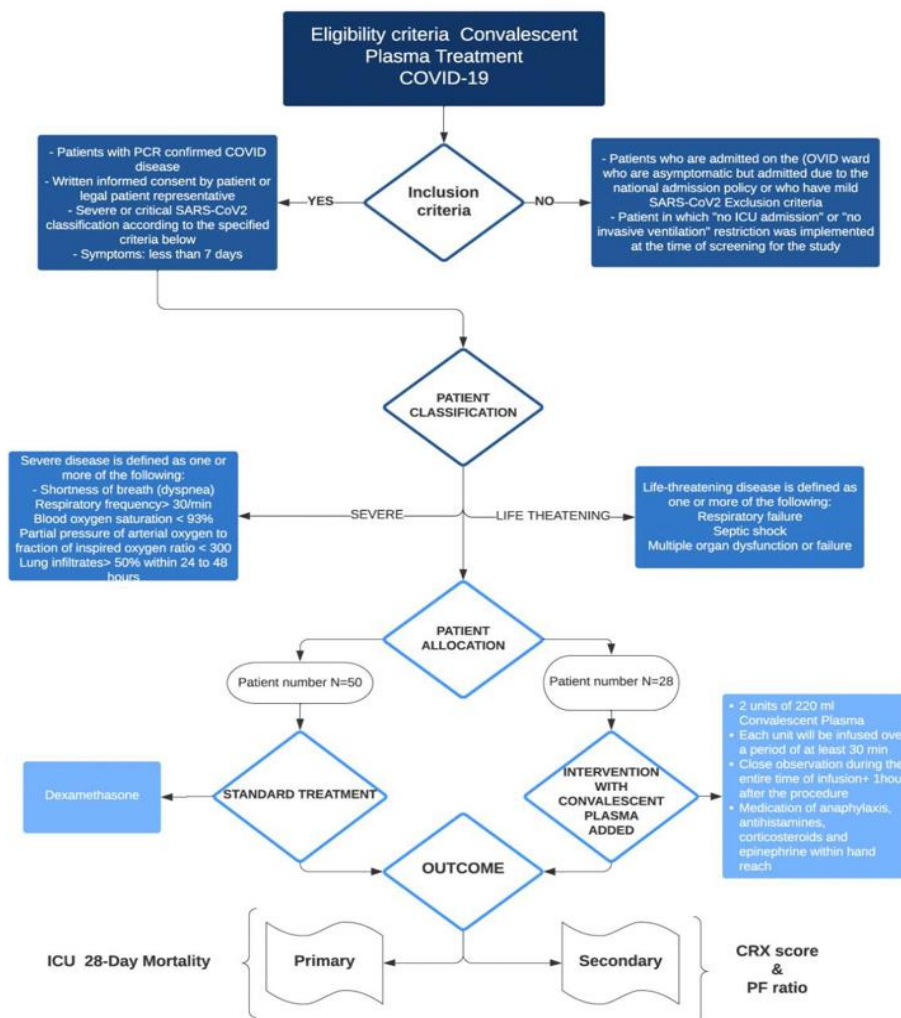


Figure 1: Patient selection flowchart with study enrolment and design.

I Study Flow Chart

After referral to the ICU, the patients were treated by supported therapy such as additional respiratory and circulatory support. After being found eligible for additional CP treatment, a selection to either standard treatment including dexamethasone or standard treatment added with CP was started. The study flow chart in (Figure 1) illustrates the study enrolment and design.

II Patients

Adult patients (>18 years) with severe or life-threatening COVID-19 were enrolled in the trial. The eligibility criteria included written informed consent given by the patient or next-of-kin, a PCR confirmed diagnosis of COVID-19, and admittance to the ICU due to progressive respiratory failure ranging between severe and life-threatening ARDS based on the Berlin classification [9]. For the interventional CP group, all patients admitted at the ICU who met the inclusion criteria were approached and 28 patients who consented to CP infusion and standard therapy were recruited to this arm. For the control group with standard therapy, patients were included who did not consent to CP infusion or where there was no CP available. To account for major confounding factors, the following variables were used: age, gender, co-morbidities including the history of diabetes mellitus (DM), hypertension (HTN), drugs, symptoms and signs. In addition, both the controls and treatment groups received the same standard concurrent treatment, which included administration of oral or intravenous dexamethasone at a dose of 6 mg once daily, for up to 10 days. Eligible patients with severe and life threatening COVID-19 were infused with two units of 220 ml CP once with the donated CP. For plasma selection, ABO compatibility was considered, regardless of Rhesus factor status. CP recipients were monitored for serious adverse effects (SAEs) of CP transfusion, including anaphylaxis.

III Data Collection

Data collection forms were developed to collect the data of all participants and included the clinical, radiological and laboratory information that was retrieved from the hospital electronic/paper records system. The data were cross-checked to ensure the minimization of data entry errors by two investigators. Chest x-rays were obtained at admission to ICU and after two days of treatment. Chest x-rays were evaluated using the CXR scoring system, which was specifically designed for semi-quantitative assessment of lung involvement in COVID-19 [10, 11]. In the CXR scoring system, six different lung zones are scored. Each lung zone was scored between 0 and 3, leading to an overall "CXR-SCORE," ranging from 0 to 18:

- i. Score 0 no lung abnormalities
- ii. Score 1 interstitial infiltrates
- iii. Score 2 interstitial and alveolar infiltrates (interstitial predominance)
- iv. Score 3 interstitial and alveolar infiltrates (alveolar predominance).

Chest x-rays were examined immediately prior to (day 0) and two days after (day 2) CP administration, or on day 0 and day 2 following inclusion in the control group by two independent radiologists blinded

to group assignment. CXR scoring was based on radiological improvement observed after treatment with convalescent plasma [4, 10]. Ventilation parameters, including pH, pCO₂, pO₂, FiO₂, PaO₂ / FiO₂, were assessed on day 0 and day 2 for both groups, were used to measure oxygen balance changes as the calculated PaO₂/FiO₂ (PF) ratio. This is the ratio of arterial oxygen partial pressure (PaO₂ in mmHg) to fractional inspired oxygen and is related to the severity of disease and outcome by calculation the acute respiratory distress syndrome scale [9, 12].

IV Convalescent Plasma Donor Recruitment

CP donors were recruited from hospitalized adult (≥18y) patients who had recovered from a PCR-confirmed SARS-CoV-2 infection at the time of plasma donation. Eligibility criteria for donating CP were a positive response measured as optical densitometry (OD) levels of the anti-SARS-CoV-2 total IgG antibody Wantai test, being at least 14 days asymptomatic following resolution of COVID-19 and having two negative PCR-tests from nasopharyngeal swabs [13]. Prior to CP collection by the critical care team, written informed consent was obtained from all donors. Following CP donation, all CP samples were screened using the standard clinical and laboratory protocol used by the National Blood Bank of the Suriname Red Cross. This includes screening for antibodies against potential transfusion-transmitted infectious diseases, i.e., HIV1/2, HBsAg, Hepatitis C virus, syphilis RPR, HTLV1/2 and *Trypanosoma cruzi*. Upon donation, 500ml of CP was obtained from each donor.

V Plasma Preparation Procedure and Quality Control

Convalescent plasma was obtained via plasmapheresis using HemoClear blood filters (HemoClear BV, Zwolle, The Netherlands) [14]. In this method, whole blood is separated via gravity-based sterile filtering through a multi-layered cross-flow membrane module [15]. This offers a high yield of CP without loss of RBCs and was the only available plasmapheresis method. The steps for plasma preparation are illustrated in (Figure 2) (Supplementary Video 1). By design the filtration process is maintained as a closed-loop system to prevent potential contamination. The diluted blood was passed through the filter during two consecutive filtration rounds. Plasma was collected one meter below the device level in the satellite plasma bag. The blood cell components, diluted with saline 0.9%, were re-infused in the donor. This procedure of blood donation and CP acquisition can then be repeated within the same donor either immediately or on another day. There was no pooled storage after donation. After harvesting, convalescent plasma was sent to the National Blood Bank of the Suriname Red Cross for processing and storage. Plasma was stored at -25°C according to the guidelines for plasma storage [16].

VI Statistical Analysis

Unless stated otherwise, all analyses are performed on the complete dataset. General descriptive characteristics were assessed using SPSS for Windows (version 16.0; SPSS). Differences between the two treatment groups were analysed with Chi-Square or the Fisher exact tests where suitable for categorical variables, and t-tests for continuous variables. The differences in outcome measures, the survival analyses and the time to ICU dismissal were performed in R-studio (RStudio Desktop 1.4.1106

open source, Boston, USA). CXR score and PF ratio were summarized by presenting the median and spread in a boxplot. Differences within the therapy group were analysed with a paired t-test, differences between the two groups were analysed with an unpaired t-test. The mortality risk was

assessed with the Kaplan Meier method, and hazard ratios were calculated with a Cox proportional hazards model. A p-value of 0.05 was considered to represent significant differences. Statistical parameters are reported directly in the figures and figure legends.

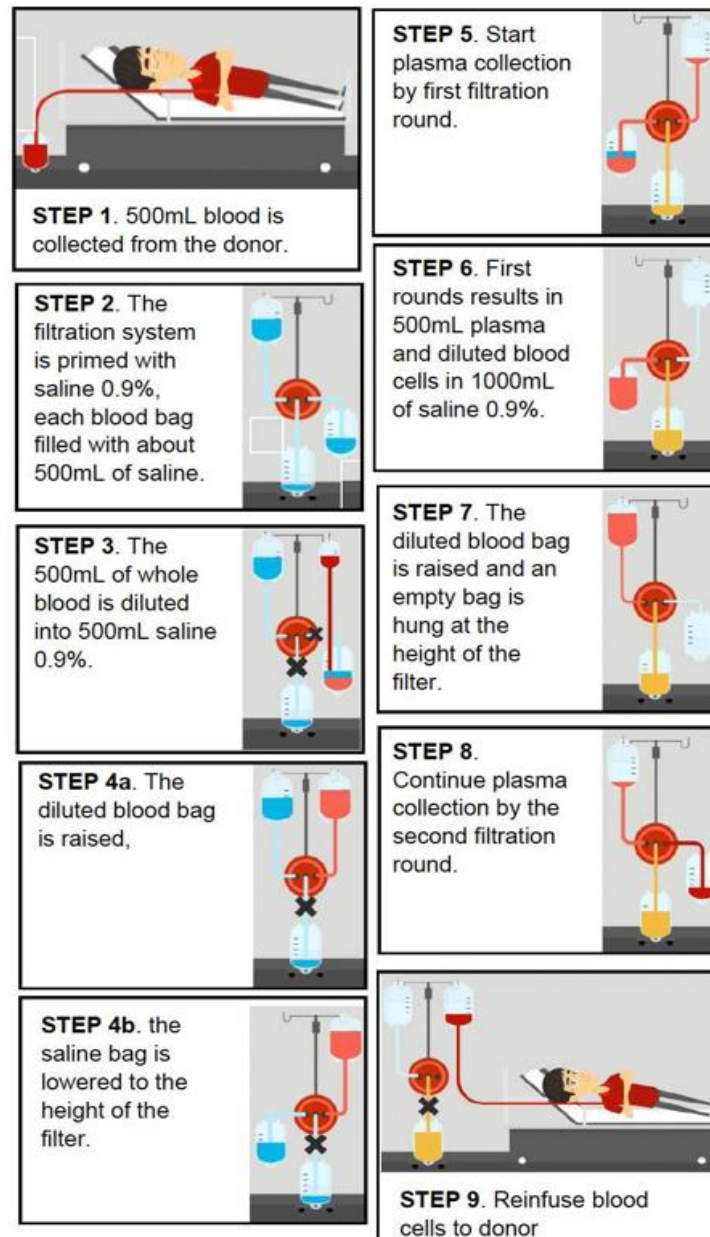


Figure 2: Convalescent plasma collection method by means of the HemoClear system.

Results

I Patients

A total of 78 patients were enrolled in the trial of which 28 (35.9%) received CP. The mean age of the patients were 53.0 ± 14.3 years and 43 patients (55%) were male. There were no significant differences in baseline characteristics between the CP intervention group and the control group. The demographic, clinical factors and laboratory measurements between the intervention (convalescent plasma) group

and the control (dexamethasone) group are described in (Tables 1 & 2). Treatment allocation to the intervention group was biased due to limited availability of donors; only part of ICU doctors was organizing donations and informed consents of the donors and patients were sceptic about this treatment option based also on prohibitive religious rules. However, there was a tendency towards more life-threatening patients allocated to the intervention group than in the standard treatment group (CP 42.9% vs. 34%). After initial ICU admission, all patients started with standard treatment.

Table 1: Comparison of demographic and clinical factors between the intervention (convalescent plasma) group and the control (dexamethasone) group.

Variable	Control group (N = 50)	Convalescent plasma (N = 28)	p-value
Demographic characteristics			
Age in years mean (sd)	52.5 (14.5)	53.8 (14.3)	0.71
Male sex n (%)	30 (60.0)	13 (48.1)	0.32
Body mass index, median [IQR]	30 [28 – 32]	32 [29 – 35]	0.19
Co-morbidities n (%)			
Diabetes Mellitus	15 (30.6)	12 (44.4)	0.23
Hypertension	23 (47.9)	15 (55.6)	0.53
Stroke	1 (2.1)	1 (3.7)	1.00
Renal disease	6 (12.5)	6 (22.2)	0.33
Ischaemic heart disease	3 (6.4)	4 (14.8)	0.25
Drug usage n (%)			
Oral diabetics	17 (35.4)	10 (38.5)	0.80
Insulin	3 (6.4)	3 (11.1)	0.66
ACE-inhibitors	8 (17.0)	7 (25.9)	0.36
Angiotensin receptor blockers	3 (6.4)	1 (3.7)	0.62
Presence of symptoms n (%)			
Fever	39 (78.0)	22 (81.5)	0.72
Dyspnea	44 (88.0)	24 (88.9)	1.00
Cough	25 (50.0)	18 (69.2)	0.11
Sputum	4 (8.2)	2 (7.4)	0.91
Loss of taste	7 (14.3)	6 (22.2)	0.53
Anosmia	7 (14.3)	5 (18.5)	0.75
Diarrhea	10 (20.4)	3 (11.1)	0.36
Vomiting	4 (8.3)	2 (7.4)	1.00
Acute renal failure	3 (6.3)	6 (23.1)	0.06
Covid Classification n (%)			
Severe	33 (66.0)	16 (57.1)	
Life-threatening	17 (34.0)	12 (42.9)	0.44

ACE: Angiotensin Converting Enzyme; IQR: Interquartile Range; Sd: Standard Deviation.

Table 2: Comparison of Laboratory findings between the intervention (convalescent plasma) group and the control (dexamethasone) group at baseline.

Hematological parameters, value (95% CI)	Control group (N = 50)		Convalescent plasma (N = 28)		p-value
Haemoglobin, mmol/L	7.7	(7.1 – 8.4)	7.3	(6.7 – 8.1)	.26
Hematocrit, %	37	(34 – 40)	36	(33 – 40)	.81
Leukocytes, x 10 ⁹ /L	10.8	(7.7 – 14.8)	10.6	(7.0 – 16.2)	.76
Lymphocytes, x 10 ⁹ /L	1.1	(0.8 – 1.7)	1.0	(0.8 – 1.4)	.49
Thrombocytes, x 10 ⁹ /L	220	(177 – 309)	242	(190 – 322)	.52
C-reactive protein, mg/L	14.3	(5.5 – 22.2)	16.4	(6.4 – 31.2)	.26
Ferritin, mcg/L	1192	(679 – 1502)	1502	(704 – 1502)	.20
D-Dimer, mg/L	225	(139 – 668)	333	(124 – 1060)	.59
Fibrinogen, g/L	5.4	(4.4 – 6.5)	5.7	(5.0 – 6.9)	.12
APTT, sec	36.0	(32.9 – 40.8)	36.2	(29.0 – 40.2)	.47
Creatinine, mol/L	97	(70 – 129)	82	(63 – 117)	.08
Aspartate aminotransferase, U/L	42	(30 – 66)	50	(30 – 69)	.77
Alanine aminotransferase, U/L	42	(25 – 56)	41	(31 – 54)	.96
Lactate dehydrogenase, U/L	357	(260 – 443)	336	(268 – 460)	.77
Creatin Kinase, U/L	127	(64 – 343)	210	(123 – 474)	0.08

APTT: Activated Partial Thromboplastin Time.

II Convalescent Plasma Donors

All donors who were selected and screened according to the guidelines for CP donation tested positive on qualitative testing for Abs. The mean

OD (\pm sd) was 2.66 (\pm 0.23). Based on studies available at the beginning of the trial, describing the relation between OD levels of the CP in relation to its virus neutralizing efficacy together with the rather early

harvesting after the illness of the donor, it was assumed to be effective CP [13, 17].

III Primary Outcome: 28-Day Mortality

Survival probability was significantly higher in the CP group compared to the control group with standard care ($P=0.027$) (Figure 3A). At day 28 in ICU, mortality had occurred in five out of 28 (18%) of the intervention group versus eighteen out of fifty (36%) in the control group. When stratifying the therapy groups into disease severity as determined at baseline, the survival probability in the control group with the life-threatening disease was significantly lower compared to the other three conditions, with a log-rank p-value of 0.0051 (Figure 3B). These results suggest a protective effect of CP therapy, which is most pronounced in the life-threatening group. Although there seems to be

some effect of baseline disease severity on mortality probability, this was not statistically significant and CP therapy remained positively associated with reduction of mortality even when correcting for this. Univariate hazard ratios and 95% CI and log-rank p-value revealed that age, the presence of diabetes, and the severity of COVID-19 at baseline and treatment with CP had a significant impact on mortality (Supplementary Table 1). When corrected for these four significantly influencing covariates, a higher survival probability was still found for the convalescent plasma intervention group, with a hazard ratio (HR) of 0.22 (95%CI, 0.074-0.067) (Figure 3C). Age was the only other covariate that increased the risk of mortality significantly (HR, 1.08 [95%CI, 1.022-1.14]; $P = 0.006$). The severe COVID-19 group had a non-significant trend towards reduced mortality compared to the life-threatening group with a HR of 2.39 [95% CI, 0.82-6.97]; $P=0.11$.

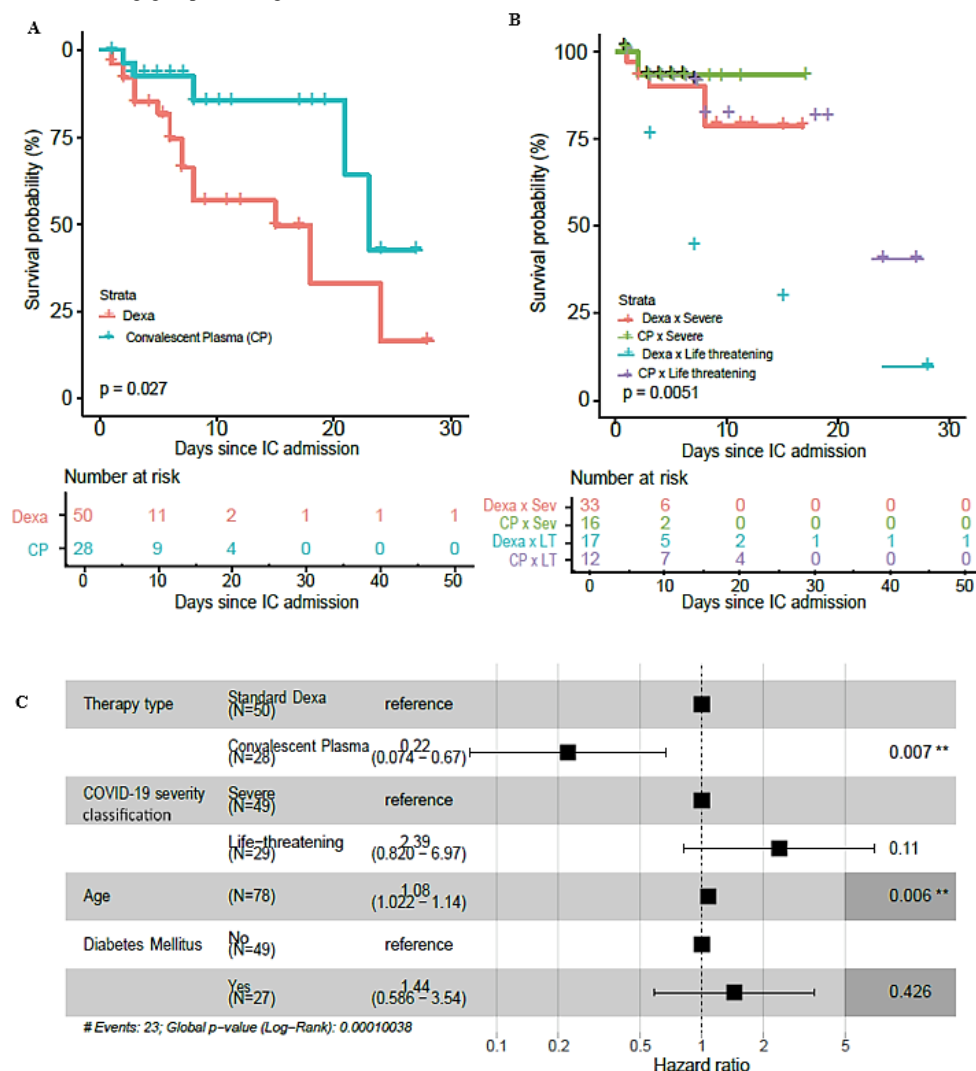


Figure 3: Survival probabilities during IC admission for convalescent plasma and standard dexta treatment group. **A)** Kaplan Meier curve of complete dexa ($n=50$) and convalescent plasma ($n=28$) treatment groups. Right-censoring took place when a person was dismissed from the IC before the last measured timepoint, death was counted as an event. The longest IC admission duration in the convalescent plasma group was 27 days, while it was 50 days in the standard dexa group. **B)** Kaplan Meier curve of both treatment groups split into the COVID-19 severity classification. Censoring took place when a person was dismissed from the IC before the last measured time point, death was counted as an event. The p-value of the log-rank signed test is reported directly in the figure. **C)** A multivariate cox proportional hazards analysis was performed with the univariately significant variables. Hazard ratios and 95%CI and log-rank p-value are reported.

IV Secondary Outcome: CRX Score and PF Ratio

i Chest Radiographic Findings

To identify early changes in clinical response, the CXR score was determined for each patient upon ICU admission (Day 0) and 48 hours after the treatment initiation (Day 2). For the control group, no changes were observed in CXR score between day 0 and 2 in the severe disease category (Day 0: 7.5 [4.8 – 11], Day 2: 8 [6 – 12], median change: 1 [-2], $p=0.19$), or in the life-threatening category (Day 0: 11 [3 – 12], Day 2: 8 [4 – 13], median change: 0 [-3 – 2], $p=0.92$) (Figure 4A). In the CP

group, a downward trend was observed in both the severe (Day 0: 9 [6.3 – 10]; Day 2: 7 [4.8 – 8.3], median change: -3 [-4 – -1.5], $P=0.07$) and life-threatening (Day 0: 6 [5 – 6.8]; Day 2: 2.5 [2 – 3.8], median change: -3 [-4.8 – -1], $P=0.07$) categories. The effect size was determined for both groups by calculating the difference in CXR score between day 0 and day 2 (delta CXR) (Figure 4B). In the severe disease category, the delta CXR after CP treatment, i.e., median -3 points, was significantly greater than in the control group (median 1 point, $P=0.0013$). In the life-threatening disease group, no significant improvement in CXR score was found between the CP (median -3 points) and control group (median 0 points, $P=0.48$).

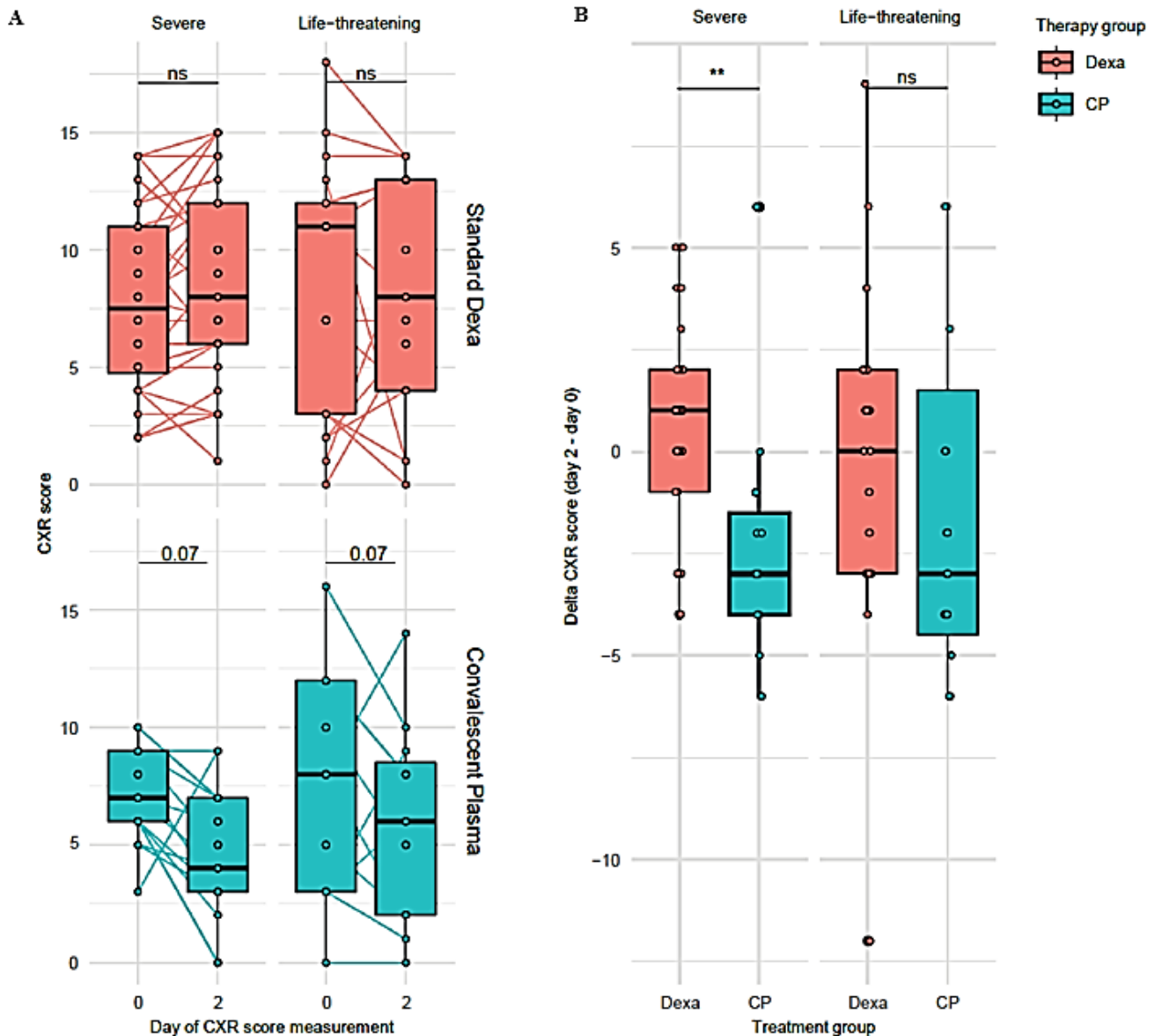


Figure 4: CXR score improvement in convalescent plasma and standard dexamethasone treatment group. **A)** Change of CXR score from day of ICU admission (day 0) and one day after treatment start (day 2). The standard dexamethasone treatment (red) and convalescent plasma treatment (blue) groups are categorized into severe and life-threatening at the time of ICU admission, based on the COVID-19 severity classification described by Ling *et al.* Differences between the two time points were calculated using a two-sided paired t-test. **B)** The delta CXR score in the standard dexamethasone and convalescent plasma group. The delta CXR score is calculated by subtracting the score of day 0 from the score on day 2. The differences between the two groups were calculated using an unpaired t-test with variance correction, * $p < 0.05$, ** $p < 0.01$, *** $p < 0.001$. p-values of borderline significant tests are reported directly in the figure. NS: not significant.

ii PF Ratio

Besides changes in CXR score, we also evaluated the impact of CP on pulmonary oxygen exchange capacity (PF ratio). Significant improvement of PF ratio (PFR) after 48 hours was observed both in the control group (Day 0: 94.4 [75.4 – 126.5]; Day 2: 151.4 [100.3 – 231.8], median change: 35.3 [14.6 – 83.3], $P < 0.001$) as well as the CP group (Day 0: 150.8 [93.1 – 300.5]; Day 2: 286.7 [201.7 – 390], median change: 100.25 [29.2 – 168], $P = 0.03$) (Figure 5A). In the life-threatening category, no improvement was observed in the control group (Day 0:

99.5 [81.3 – 132]; Day 2: 99.4 [74.8 – 183.8], median change: 18.5 [-19.9 – 48.6], $P = 0.26$). An upward trend was observed in the CP group (Day 0: 166.7 [97.0 – 236.1]; Day 2: 249 [189.2 – 397.5], median change: 110.5 [-3.5 – 231], $P = 0.08$), but this just failed to reach statistical significance. A comparison of the PFR improvement after the standard (median 35.3) or CP treatment (median 151.6) revealed a significantly greater improvement in the severe CP group ($P = 0.011$) (Figure 5B). In the life-threatening group, no significant difference in PFR improvement was found between the control (median 18.5) and convalescent plasma group (median 166.7, $P = 0.63$).

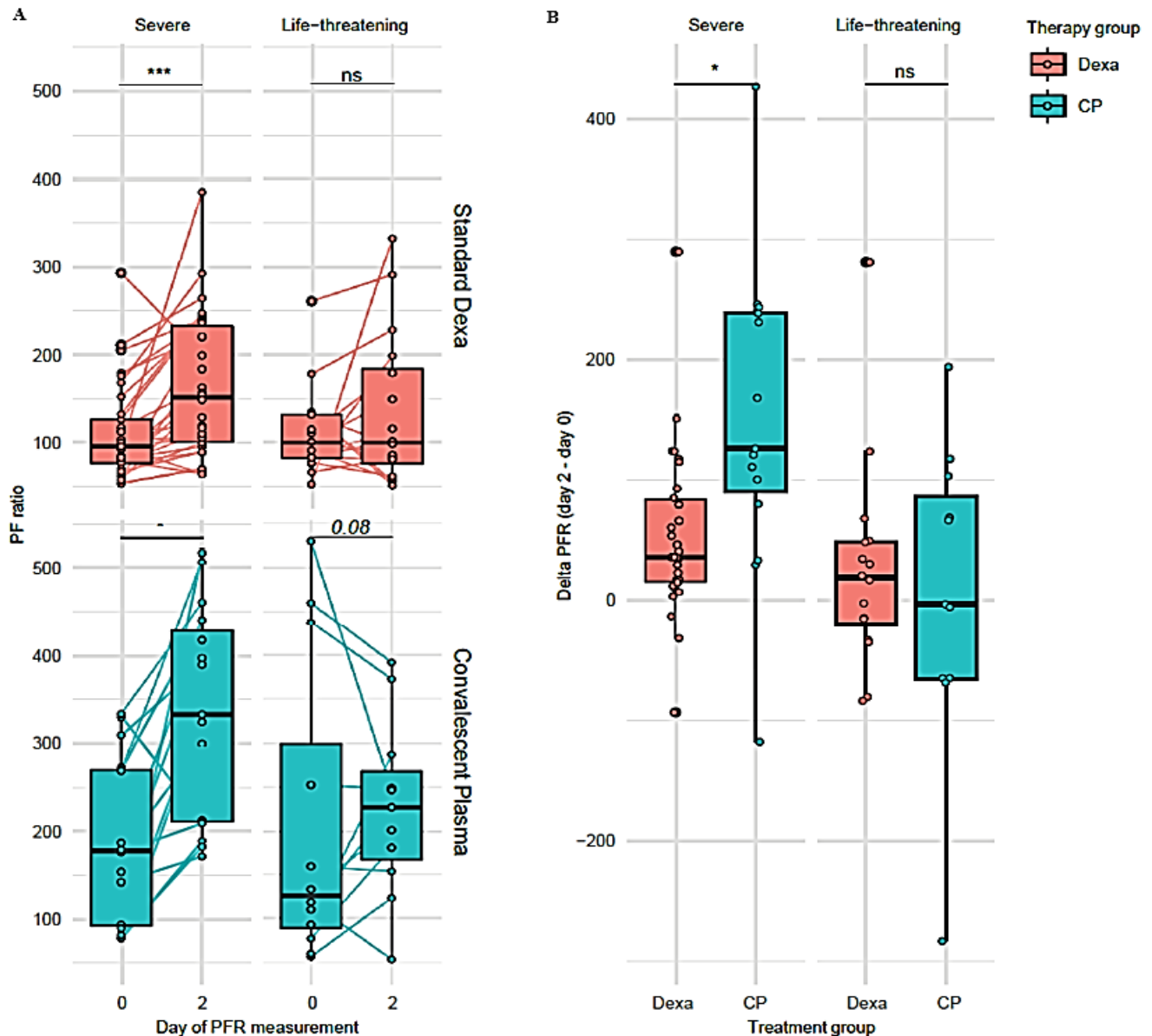


Figure 5: PF rate improvement in convalescent plasma and standard dextrose treatment group. **A)** Change of PFR from day of IC admission (day 0) and one day after treatment start (day 2). The standard dextrose treatment (red) and convalescent plasma treatment (blue) groups are categorized into severe and life-threatening at the time of IC admission, based on the COVID-19 severity classification described by Ling *et al.* Differences between the two time points were calculated using a two-sided paired t-test. **B)** The delta PFR in the standard dextrose and convalescent plasma group. The delta PFR is calculated by subtracting the score of day 0 from the score on day 2. The differences between the two groups were calculated using an unpaired t-test with variance correction, * $p < 0.05$, ** $p < 0.01$, *** $p < 0.001$. p-values of borderline significant tests are reported directly in the figure. NS: not significant.

Discussion

The COVID pandemic has had a major health and socio-economic impact on LMICs, including Suriname. Many potential treatment options being developed in high-income countries, including the use of CP are not available in low-resource settings. Here, we report the interim results of a non-randomized intervention trial in Suriname using COVID-19 convalescent plasma obtained via gravity-filtration. The primary outcome showed a significantly higher ICU survival probability in the CP group compared to the control group, with a hazard ratio of 0.22. Significant improvement was also observed for the secondary endpoints, i.e., changes in PF ratio and CXR scores 48 hours after treatment over baseline, as markers for early clinical treatment effects. Based on 32 earlier studies on outbreaks of SARS coronavirus infection and severe influenza, consistent evidence was found for the beneficial effects of CP therapy on survival [18]. The mortality reduction that we observed is in line with other reports on CP treatment in severe COVID-19 ICU patients.

A review of nine studies showed that CP treatment significantly reduced mortality of ICU patients with COVID-19, which was more pronounced in severely ill patients than in critically ill patients. CP treatment in severe COVID-19 cases concluded to result in clinical improvement with limited adverse events [19]. In a propensity score-matched control study of Mount Sinai, survival also improved in CP recipients, including improvement of oxygenation [20]. However, in a prospective open-label randomized trial by Li performed in the Wuhan region in China, 28-day mortality was not significantly reduced (15.7% vs. 24.0%; OR, 0.65; 95% CI, 0.29-1.46; $P = .30$) [6]. In that study, clinical improvement within 28 days was observed in the severe convalescent plasma group compared to the control group, but not in the subgroup with life-threatening disease (HR, 0.88; 95% CI, 0.30–2.63; $P = 0.83$). Since the interaction by disease severity failed to reach statistical significance; Li concluded that there was no benefit overall of CP treatment [6].

In a recent randomized trial by Simonovich, no significant benefit of CP at 30 days with regards to clinical outcome, with 11% mortality observed both in the CP group and in the placebo group [21]. This is in contrast with our findings, where we observed a strong significant overall effect of CP, which remained significant in the life-threatening group although with an almost two-fold increased risk on mortality when compared to the severe group. Due to differences in healthcare, patient demographics, co-morbidities, circulating SARS-CoV-2 variants and many other factors, it is difficult to directly compare results from other trials with our study. There may be several explanations for why we observed a strong treatment effect. A key factor might be the composition of CP that was used [22, 23]. The composition CP likely varies according to the method used to separate plasma from blood, i.e., by mechanical centrifugation or by filtration [24-26]. During centrifugation, plasma factors may be damaged or inactivated by shear forces generated by centrifugal or pressure forces [27]. In contrast, the gravity-based filtration method we used to produce CP is based on low pressure and low shear forces. Moreover, the membrane pores are 3 to 10 times larger than those of conventional plasmapheresis membranes, which may affect large molecules differently [25].

During the acute phase of SARS-CoV-2 infection, patients start producing antibodies including IgA, IgM and IgG against viral epitopes. Whereas IgM antibodies wane rapidly from circulation, IgG becomes the dominant antibody isotype in blood ≥ 6 weeks after the initial onset of disease [6]. Additionally, blood from convalescent patients who were admitted to ICU because of severe or life-threatening COVID-19 contained almost 4-8-fold higher antibody concentrations than mild or moderate COVID-19 patients [22]. Since we isolated plasma from convalescent ICU patients with a median of 3 weeks after recovery by gravity-filtration, it is likely that CP from these donors contains higher concentrations of virus-neutralizing antibodies, including IgM, than CP from patients who recovered from less severe COVID-19 disease isolated at a later stage after recovery. It has previously been reported that patients that are severely affected with respiratory failure produce less IgM [5, 28].

At present, not much is known about the effective dose of CP and whether repetitive doses are required or not. Mostly, CP dose is based on the practical supply of CP by blood banks as 220ml bags. In the current trial, two doses of 220ml were infused on one day, which is higher than the study by Li *et al.* where, most patients received a single infusion of 200 ml of CP [6]. The average age of patients in the CP and control group in our study was 53 and 54 years, respectively, which is much lower than in other studies where the mean age has been reported above 60 or even 70 years of age [22, 29]. Since increasing age was associated with reduced survival probability in our study; age should be taken account when interpreting study results of CP therapy. The effects of age may extend beyond CP treatment, since the cardiac surgery DECS trial indicated that dexamethasone might only be beneficial in treating respiratory failure when given to patients below 75 years of age [30-32].

A significant decrease in mortality was seen with the use of dexamethasone for up to 10 days in patients requiring respiratory support as described in the RECOVERY study [1]. The effect of prolonged immunomodulation could thus be an asset in the recovery from severe or life-threatening COVID-19 disease. This effect was not observed in our control group, probably due to the already very high severity of COVID-19 upon admission to the ICU. The increase of other clinical parameters such as PF ratio and decrease of CXR score by resolving pulmonary oedema may represent the first step in alleviating the severity of respiratory failure, thereby increasing survival probability. CP effects on mortality reduction were most obvious in the life-threatening group, which was associated with an early improvement in delta PF ratio and CXR score 48h after treatment initiation. Although it remains unclear which plasma factor or combination thereof may drive clinical improvement; it may be a direct effect of virus-neutralizing antibodies [33].

Alternatively, but not mutually exclusive, the rapid clinical improvement may also be due to direct immunomodulatory effects of anti-inflammatory plasma factors such as C1-esterase [34]. Restoring endothelial barrier function and improvement of alveolar-capillary oxygen transmission and oxygen diffusion capacity are possible treatment effects of CP [35]. Studies on novel therapeutics interventions in LMICs, including the use of CP, are generally faced with many practical barriers, both with regards to clinical and laboratory equipment. For instance, centrifugation-based plasmapheresis requires sophisticated

and difficult-to-transport equipment. In the absence of such equipment, harvesting of CP in our study was made possible by a novel filtration device, i.e., the HemoClear device. Although initially indicated for blood salvage, the portable device proved an accessible method for plasma collection in low-resource settings as there is no need for electricity and the device can be used at the bedside. Both CXR and PF scoring may facilitate evaluation of the efficacy of treatments such as CP and clinical decision making in an LMIC setting. Although we have not yet validated the use of chest x-ray as a surrogate method to evaluate the efficacy of CP, results from our study are in line with the recent validation study by Borghesi *et al.*, which showed that the CXR score was significantly higher in patients who died than those discharged from the hospital. This suggests that CXR scoring may represent a useful and practical tool to objectively score clinical improvement and identify early signs of improvement [10].

This study is limited by the non-randomized design, which may have resulted in differences between the CP and the control group. As CP was not always readily available during the second epidemic, selection bias could be present. Furthermore, CP therapy was initiated three days after ICU admittance. As such, treatment bias may therefore exist since the CP group consisted of more life-threatening patients than the control group. However, it should be noted that this bias would be expected to decrease any beneficial effect of CP treatment. Since we observed an opposite effect, one could argue that that CP was highly efficacious. Another limitation is the relatively small number of patients. Based on the results of this trial, new patients are being enrolled, which may provide further evidence on the potential beneficial effects of CP. Further characterization of the CP used in this study is needed to fully ascertain its efficacy and correlate variation in plasma factors to clinical outcome in CP recipients.

Conclusion

COVID-19 remains a global health threat and reliable treatment is crucial for reducing mortality and the burden on global health care. Access to CP therapy in a low-resource setting was enabled by the novel filtration device HemoClear, which was easy to implement in an ICU setting and was used without adverse effects on both the donor and the CP recipients [36, 37]. Equitable access to such methods allows readiness in case of viral mutations or new pandemics. The use of simple

and available methods such as chest x-ray and calculated PF ratios allowed early assessment of treatment effects. SARS-CoV-2-specific therapies, including CP from recovered patients, could be highly effective options to treat COVID-19 in the absence of widespread vaccination. As such, CP therapy may help bridge the gap until sufficient vaccination coverage has been reached.

Ethical Approval

Ethical approval was granted by the Suriname Ministry of Health's Ethics Review Board (registration number: IGAP02-482020; ISRCTN18304314) and was performed in accordance with the declaration of Helsinki.

Data Availability

The data used to support the findings of this study are available from the corresponding author upon request.

Conflicts of Interest

Arno P. Nierich is the inventor of the HemoClear filter and holds stock ownership in HemoClear BV, Dr. Stolteweg 70, 8025 AZ Zwolle, Netherlands.

Funding

This study was funded by the Academic Hospital Paramaribo, without additional third-party funding.

Acknowledgement

We would like to thank Dion Osemwengie for her support in training on use of the blood filter and contributions to the plasma acquisition protocol. The article has been submitted and published as preprint in Research Square on April 19, 2021 (Link 1).

Supplementary Materials

Supplementary Video 1: Infographic on the plasma collection method (Link 2).

Supplementary Table 1: Univariate hazard ratios of patient specific variables on death during IC admission.

	<i>HR</i>	<i>95%CI</i>	<i>p-value</i>
Age	1.1	(1-1.1)	0.0025
BMI	0.99	(0.92-1.1)	0.66
Sex	0.66	(0.25-1.7)	0.4
COVID-19 severity classification	3	(1-8.4)	0.042
Treatment start day	0.94	(0.87-1)	0.12
Therapy type	0.34	(0.12-0.92)	0.035
D-dimers*	1	(1-1)	0.26
DeltaCXR*	1	(0.9-1.1)	0.88
DeltaPFR*	1	(0.99-1)	0.38
SAP*	0.99	(0.97-1)	0.46
DAP*	0.99	(0.95-1)	0.54

CRP*	0.98	(0.95-1)	0.38
Ferritin*	1	(1-1)	0.29
Fibrinogen*	1	(0.96-1)	0.94
Hb*	0.83	(0.58-1.2)	0.31
<i>Creatin*</i>	<i>1</i>	<i>(1-1)</i>	<i>0.065</i>
LDH*	1	(1-1)	0.13
Thrombos*	1	(1-1)	0.96
<i>Hypertension</i>	<i>2.3</i>	<i>(0.94-5.7)</i>	<i>0.069</i>
Ischemic heart disease	0.96	(0.22-4.2)	0.95
Diabets Mellitus	2.4	(1-5.5)	0.047
Kidney Failure	1.2	(0.4-3.5)	0.77
Stroke	2.1	(0.47-9.7)	0.33

A univariate cox proportional hazards analysis was performed for each variable. Hazard ratio, 95% confidence interval and p-value are described. Bolded variables are significantly associated with death and included in the multivariate cox proportional hazards analysis, variables in italics are borderline non-significant and not included in further analysis. The COVID-19 severity classification is based on the classification described by Ling *et al.*

*measured at time of IC admission

REFERENCES

- RECOVERY Collaborative Group, Horby P, Lim WS, Emberson JR, Mafham M *et al.* (2021) Dexamethasone in Hospitalized Patients with Covid-19. *N Engl J Med* 384: 693-704. [[Crossref](#)]
- van Paassen J, Vos JS, Hoekstra EM, Neumann KMI, Boot PC *et al.* (2020) Corticosteroid use in COVID-19 patients: a systematic review and meta-analysis on clinical outcomes. *Crit Care* 24: 696. [[Crossref](#)]
- Wang Y, Zhang D, Du G, Du R, Zhao J *et al.* (2020) Remdesivir in adults with severe COVID-19: a randomised, double-blind, placebo-controlled, multicentre trial. *Lancet* 395: 1569-1578. [[Crossref](#)]
- Duan K, Liu B, Li C, Zhang H, Yu T *et al.* (2020) Effectiveness of convalescent plasma therapy in severe COVID-19 patients. *Proc Natl Acad Sci* 117: 9490-9496. [[Crossref](#)]
- Shen C, Wang Z, Zhao F, Yang Y, Li J *et al.* (2020) Treatment of 5 Critically Ill Patients With COVID-19 With Convalescent Plasma. *JAMA* 323: 1582-1589. [[Crossref](#)]
- Li L, Zhang W, Hu Y, Tong X, Zheng S *et al.* (2020) Effect of Convalescent Plasma Therapy on Time to Clinical Improvement in Patients With Severe and Life-threatening COVID-19. *JAMA* 324: 460-470. [[Crossref](#)]
- Gharbharan A, Jordans CCE, Geurtsvankessel C, den Hollander JG, Karim F *et al.* (2020) Convalescent Plasma for COVID-19. A randomized clinical trial. *MedRx*.
- Hoetink A, Scherphof SF, Mooi FJ, Westers P, van Dijk J *et al.* An in Vitro Pilot Study Comparing the Novel HemoClear Gravity-Driven Microfiltration Cell Salvage System with the Conventional Centrifugal XTRA™ Autotransfusion Device. *Anesthesiol Res Pract* 2020: 9584186. [[Crossref](#)]
- ARDS Definition Task Force, Ranieri VM, Rubenfeld GD, Thompson BT, Ferguson ND *et al.* (2012) Acute respiratory distress syndrome: the Berlin Definition. *JAMA* 307: 2526-2533. [[Crossref](#)]
- Borghesi A, Maroldi R (2020) COVID-19 outbreak in Italy: experimental chest X-ray scoring system for quantifying and monitoring disease progression. *Radio Med* 125: 509-513. [[Crossref](#)]
- Al Helali AA, Saeed GA, Elholiby TI, Kukkady MA, Mazrouei SS Al (2020) Radiological and clinical improvement in a patient with COVID-19 pneumonia postconvalescent plasma transfusion: A case report. *Radiol Case Rep* 15: 2171-2174. [[Crossref](#)]
- Ferguson ND, Fan E, Camporota L, Antonelli M, Anzueto A *et al.* (2012) The Berlin definition of ARDS: an expanded rationale, justification, and supplementary material. *Intensive Care Med* 38: 1573-1582. [[Crossref](#)]
- GeurtsvanKessel CH, Okba NMA, Igloi Z, Bogers S, Embregts CWE *et al.* (2020) An evaluation of COVID-19 serological assays informs future diagnostics and exposure assessment. *Nat Commun* 11: 3436. [[Crossref](#)]
- Osemwengie D, Nierich A (2020) Novel blood separation device enables production of platelet-rich red blood cells and convalescent plasma. *Anesth Anal* 13.
- Hoetink A, Scherphof SF, Mooi FJ, Westers P, van Dijk J *et al.* (2020) An In Vitro Pilot Study Comparing the Novel HemoClear Gravity-Driven Microfiltration Cell Salvage System with the Conventional Centrifugal XTRA™ Autotransfusion Device. *Anesthesiol Res Pract* 2020: 9584186. [[Crossref](#)]
- Storch EK, Custer BS, Jacobs MR, Menitove JE, Mintz PD (2019) Review of current transfusion therapy and blood banking practices. *Blood Rev* 38: 100593. [[Crossref](#)]
- Salazar E, Christensen PA, Graviss EA, Nguyen DT, Castillo B *et al.* (2021) Significantly Decreased Mortality in a Large Cohort of Coronavirus Disease 2019 (COVID-19) Patients Transfused Early with Convalescent Plasma Containing High-Titer Anti-Severe Acute Respiratory Syndrome Coronavirus 2 (SARS-CoV-2) Spike Protein IgG. *Am J Pathol* 191: 90-107. [[Crossref](#)]
- Mair Jenkins J, Saavedra Campos M, Baillie JK, Cleary P, Khaw FM *et al.* (2015) The effectiveness of convalescent plasma and hyperimmune immunoglobulin for the treatment of severe acute respiratory infections of viral etiology: a systematic review and exploratory meta-analysis. *J Infect Dis* 211: 80-90. [[Crossref](#)]
- Wenjing L, Yuanzheng F, Li JY, Tang LV, Yu H (2020) Safety and efficacy of convalescent plasma therapy in severely and critically ill patients with COVID-19: a systematic review with meta-analysis. *Aging (Albany NY)* 13: 1498-1509. [[Crossref](#)]
- Liu STH, Lin HM, Baine I, Wajnberg A, Gumprecht JP *et al.* (2020) Convalescent plasma treatment of severe COVID-19: a propensity score-matched control study. *Nat Med* 26: 1708-1713. [[Crossref](#)]

21. Simonovich VA, Burgos Pratz LD, Scibona P, Beruto MV, Vallone MG et al. (2021) A Randomized Trial of Convalescent Plasma in Covid-19 Severe Pneumonia. *N Engl J Med* 384: 619-629. [[Crossref](#)]
22. Li L, Tong X, Chen H, He Ru, Lv Q et al. (2020) Characteristics and serological patterns of COVID-19 convalescent plasma donors: optimal donors and timing of donation. *Transfusion* 60: 1765-1772. [[Crossref](#)]
23. Joyner MJ, Senefeld JW, Klassen SA, Mills JR, Johnson PW et al. (2020) Effect of Convalescent Plasma on Mortality among Hospitalized Patients with COVID-19: Initial Three-2 Month Experience. *MedRx*.
24. Wong HK, Lee CK, Hung IFN, Leung JNS, Hong J et al. (2010) Practical limitations of convalescent plasma collection: a case scenario in pandemic preparation for influenza A (H1N1) infection. *Transfusion* 50: 1967-1971. [[Crossref](#)]
25. Daga Ruiz D, Fonseca San Miguel F, González de Molina FJ, Úbeda Iglesias A, Navas Pérez A et al. (2017) Plasmapheresis and other extracorporeal filtration techniques in critical patients. *Med Intensiva* 41: 174-187. [[Crossref](#)]
26. Centoni PE, Liumbruno GM, Ceretelli S, Russo DF, Favre C et al. (2004) Quarantine Plasmapheresis: Donor's Recruitment Strategy and Safety. *Blood* 104: 4097.
27. Vincentelli A, Susen S, Le Tourneau T, Six I, Fabre O et al. (2003) Acquired von Willebrand Syndrome in aortic stenosis. *N Engl J Med* 349: 343-349. [[Crossref](#)]
28. Shen L, Wang C, Zhao J, Tang X, Shen Y et al. (2020) Delayed specific IgM antibody responses observed among COVID-19 patients with severe progression. *Emerg Microbes Infect* 9: 1096-1101. [[Crossref](#)]
29. Libster R, Marc GP, Wappner D, Coviello S, Bianchi A et al. (2021) Early High-Titer Plasma Therapy to Prevent Severe Covid-19 in Older Adults. *N Engl J Med* 384: 610-618. [[Crossref](#)]
30. van Osch D, Dieleman JM, Nathoe HM, Boasson MP, Kluin J et al. (2015) Intraoperative High-Dose Dexamethasone in Cardiac Surgery and the Risk of Rethoracotomy. *Ann Thorac Surg* 100: 2237-22342. [[Crossref](#)]
31. Dieleman JM, Nierich AP, Rosseel PM, van der Maaten, Jan Hofland JM et al. (2012) Intraoperative high-dose dexamethasone for cardiac surgery: a randomized controlled trial. *JAMA* 308: 1761-1767. [[Crossref](#)]
32. Dieleman JM, de Wit GA, Nierich AP, Rosseel PM, van der Maaten JM et al. (2017) Long-term outcomes and cost effectiveness of high-dose dexamethasone for cardiac surgery: a randomised trial. *Anaesthesia* 72: 704-713. [[Crossref](#)]
33. Luke TC, Casadevall A, Watowich SJ, Hoffman SL, Beigel JH et al. (2010) Hark back: passive immunotherapy for influenza and other serious infections. *Crit Care Med* 38: e66-e73. [[Crossref](#)]
34. Thomson TM, Toscano Guerra E, Casis E, Paciucci R (2020) C1 esterase inhibitor and the contact system in COVID-19. *Br J Haematol* 190: 520-524. [[Crossref](#)]
35. Wiersinga WJ, Rhodes A, Cheng AC, Peacock SJ, Prescott HC (2020) Pathophysiology, Transmission, Diagnosis, and Treatment of Coronavirus Disease 2019 (COVID-19). *JAMA* 324: 782-793. [[Crossref](#)]
36. Sabando Vélez BE, Plaza Meneses C, Felix M, Vanegas E, Mata VL et al. (2020) A practical approach for the compassionate use of convalescent plasma in patients with severe COVID-19 in developing countries. *J Infect Dev Ctries* 14: 737-741. [[Crossref](#)]
37. Smid WM, Burnouf T, Epstein J, Kamel H, Sibinga CS et al. (2020) Points to consider in the preparation and transfusion of COVID-19 convalescent plasma in low- and middle-income countries. *Afr Sang* 22: 5-7.